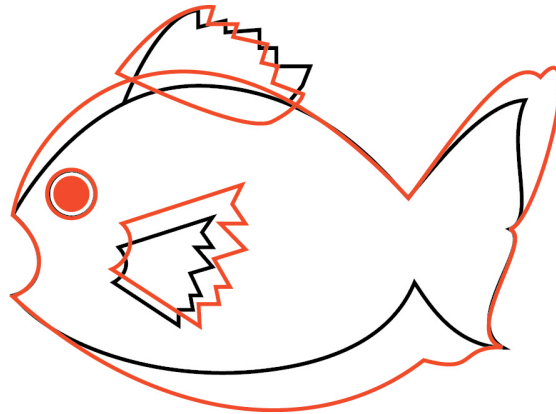


Fish In Water

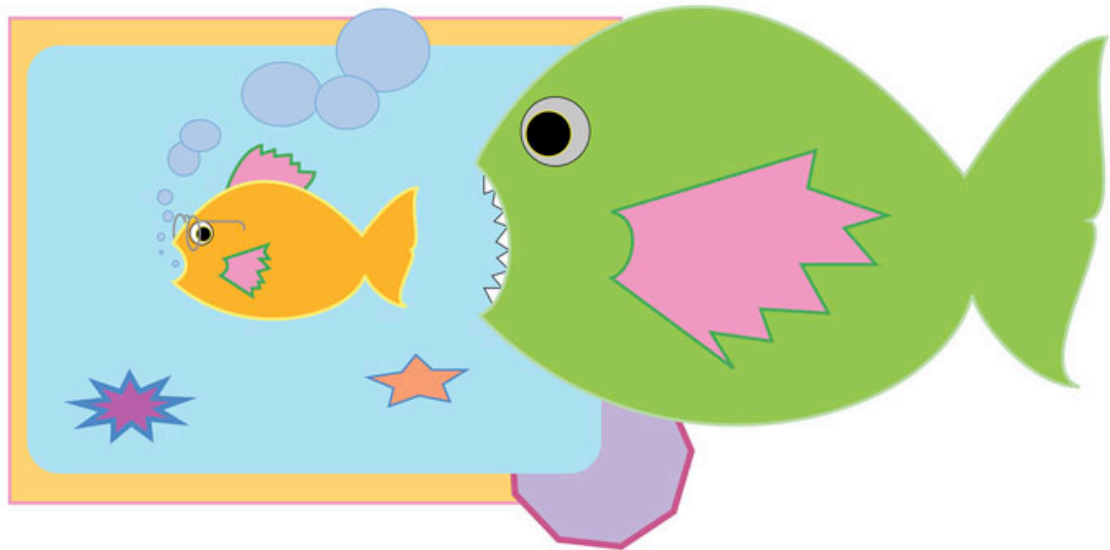
Illustrator Instructions



You must make your illustration match this one as closely as you can. The colors can be different: you may pick and use your own colors.

Using the Selection tool (the black arrow tool) select and rotate the dorsal fin (top fin) back to its original position. Then select and scale the pectoral fin (side fin) back to its original size. Select and move the eyeball into the new position so the fish is looking back.

Using the Direct Selection tool (the white arrow tool) select points and move them back into their correct position, select magnitude/direction points and move them so that the curves move back into their correct positions.



Use the Color Palette to color in the fish parts: both strokes and fills. Use the layer palette to reorder the objects in the stack so they are in their correct positions.

Multi Media, Mr. Lavendel, 2011-2012
Mt. Eden High School, Hayward, CA

Use the Selection tool (the black arrow tool) to select ALL of the fish parts and scale it smaller. Position the fish in the correct position in the illustration.

Use the shape tools to create the correct shapes. Use the Selection tool (the black arrow tool) to scale, rotate and position the shape objects into their correct position in the illustration. Use the Color Palette to color in the shape objects: both strokes and fills. Use the layer palette to reorder the shape objects in the stack so they are in their correct position.

- a. Rectangle Tool for the bottommost rectangle.
- b. Rounded Rectangle Tool for the next rectangle. Use the up and down arrow keys to adjust the roundness of the corners.
- c. Ellipse Tool. For the fish bubbles and eyeglasses. Hold down the Shift key to make circles. Use the Pen tool to draw the rest of the eyeglasses.
- d. Polygon Tool to make the 9 sided figure at the bottom right corner. Use the up and down arrow keys to adjust the number of sides. Use the layer palette to reorder the shape objects in the stack so they are in their correct position.
- e. Star Tool for the two sea stars (5 point and 9 point). Use the up and down arrow keys to adjust the number of points on each star. Scale the stars to make them look foreshortened using the selection tool box anchor points.

To create the big fish with the teeth, use the Selection tool (the black arrow tool) to select the small fish body. Copy and position it to the right side by dragging it to the right while holding down the ALT key and then scale it bigger. Select and move the eyeball into the new position so the fish is looking forward. Use the Direct Selection tool (the white arrow tool) to modify the size and shape of the mouth (bigger). Use the Pen tool to create the teeth and the pectoral fin (side fin). Use the Color Palette to color in the fish parts: both strokes and fills.